



ARMY COMBAT FITNESS TEST (ACFT)

IDIQ CONTRACT NO. W56HZV-19-D-0070



EQUIPMENT CATALOG

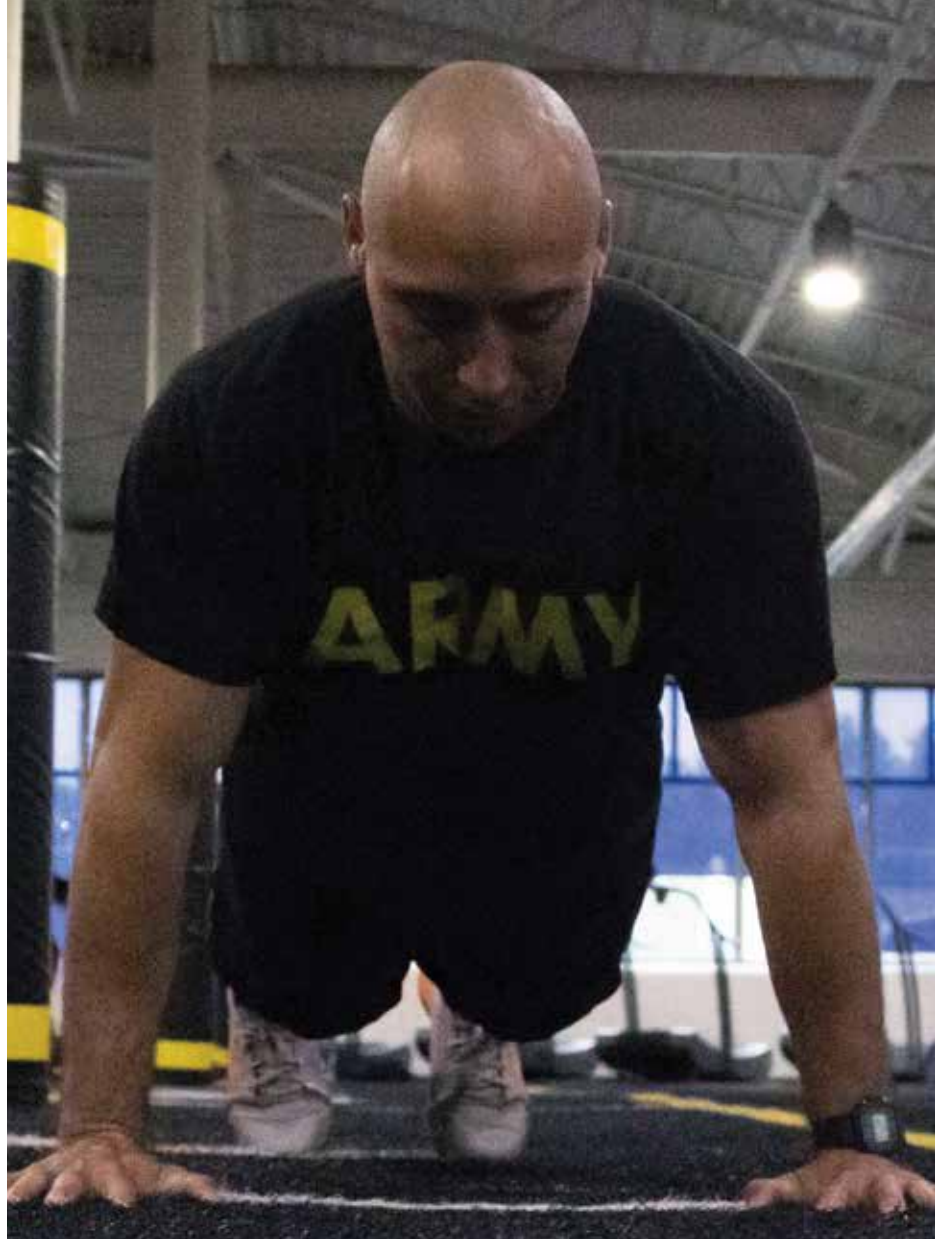
PARTNERED WITH
BEAVER FIT
DAM STRONG



BEAVERFIT

DAM STRONG

BeaverFit's entire line of functional training lockers are modified shipping containers that have been customized to create fully portable training centers that are rapidly deployable, customizable, and airworthy. **Beaverfit's 10' Functional Training Locker** facilitates physical training for up to 50 personnel and assembles in 45 minutes or less.



The six-event Army Combat Fitness Test (ACFT) will officially replace the 39-year-old Army Physical Fitness Test in October of 2020. Soldiers will have to take the ACFT twice before the October 2020 deadline and pass the test once it's implemented.

ALSO
AVAILABLE
ON



GSA Schedule 78
(GS-07F-6072P)

beaverfitusa.com
775-624-6307

ACCESSORIES

PART #	DESCRIPTION
BF-ACFT-TMR	Outdoor Timer
BF-ACFT-SW	Stopwatch
BF-ACFT-PT	Pointer
BF-ACFT-MW	Measuring Wheel
BF-ACFT-TM	Tape Measure
BF-ACFT-FC	Field Cones (Set of 20)
BF-ACFT-TC	Traffic Cones
BF-ACFT-PPB	62" Portable Pull Up Bar

REQUIRED PRODUCTS TO COMPLETE 1 ACFT LANE



QTY 1 Hexagon Bar / Trap-Bar

Hexagon bar/trap-bar (no d-handles);
Minimum load bearing 500 lbs/ 226.7

Olympic size. Weight: 60lb (unloaded) must be
within +/- 2 pounds of claimed weight

Durable hexagonal frame welded from 1.5"
square steel tubing (1.5"SCH 80 pipe sleeves)

GSA# BF_ACFTHX_60



QTY 1 Measuring Tape

Must be capable of measuring in metric

Long-lasting, vinyl-coated fiberglass tapes
in ABS shatter resistant case

Open reel with easy to wind, flush-folding handle

1x30m: Open Reel Tape Measure Inch/Metric
Scale with Double Nylon Coated Fiberglass
Blade 98 to 100-Feet/30M by 1/2-Inch

GSA# FLT18M100



QTY 1 Barbell Collar/Spring (pair)

Designed to be used on Hexagon/Trap Bar

Plastic or metal 2" x 2" barbell collar

Weight: 1lb to 2lb per pair

Must ensure collar and bar selected are fully
compatible. Fits allowable range between
1.85 to 2.10 (inches) on each side. Not all
collars work with all bars

GSA# GMG_ACFTBC_HEX



QTY 1 Nylon Sled (with Pull Strap)

Thick heavy duty nylon, fiber glass, polyester,
or a combination of different fibers

Sled standard size is between 23" and
25" (length) between 20" and 21" (width); with
reinforced padding/strips

Can handle up to four 45lb plates (180lbs)
affixed to the center of the sled by an
adjustable heavy duty strap

GSA# SPUD32



QTY 1 10LB Rubber/PVC Medicine Ball

The medicine ball shall be made from solid
rubber or PVC, not greater than 10" in diameter

Must be 10lb in weight and no more than 1%
(1.6 oz) deviation, no other weight is acceptable

The medicine ball shall be heavy duty, and
non-malleable unlike a slam ball. A textured grip
surface should make it easy to handle

GSA# GMG_ACFTMB_10



QTY 2 40LB Kettlebell

Shall be made of a natural, slip free texture
with a seamless and even finish

Weight will be 40lbs +/- 1%

Cast iron or steel construction

Powder coated

Approximate height: 11" to 12"

GSA# GMG_ACFTKB_40



QTY 1 Bumper Plates (550LB SET)

Standard diameter 445mm - 450mm with a
tolerance of +/- 1 mm (17.5197 - 17.7165")

Rubber plates made from virgin or
recycled rubber

Shore durometer 75-85 Shore A /optimal 80
+/- 5.0.; as per International Organization for
Standardization (ISO-48-4:2018)

GSA# GMG_ACFGBP

(plate weights available 10, 15, 25, 35, 45)

ACFT TESTING LOCKERS

BeaverFit ACFT Testing Lockers provide Army commands with a turnkey solution to immediately prepare for and administer the new ACFT. These lockers include all of the equipment required for the ACFT and feature integrated storage to properly maintain equipment inventory and ensure total asset visibility.

ACFT TESTING LOCKERS ARE AVAILABLE IN THE FOLLOWING CONFIGURATIONS. EACH CONFIGURATION INCLUDES A LEG TUCK STATION AND AN ACFT EQUIPMENT KIT FOR EACH LANE.

1 LANE



6 LANES



10 LANES



16 LANES

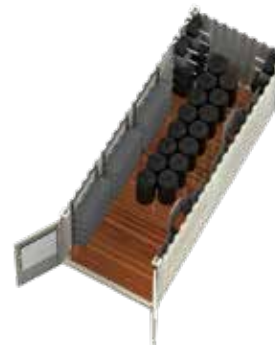


20 LANES



ACFT STORAGE LOCKERS

BeaverFit ACFT Storage Lockers feature customized internal shelving designed specifically to hold the exact ACFT equipment loadout, enabling Army commands to control inventory and ensure total asset visibility.



ACFT Storage Locker - 6 Lane

- 6 x Hex Bar Storage
- 3 x Shelves
- 1 x Wall Mounted Plate Trees
- 6 x Single Post Plate Trees
- 1 x Dolly Trucks (for moving Bumper Plates)

ACFT Storage Locker - 10 Lane

- 10 x Hex Bar Storage
- 9 x Shelves
- 3 x Wall Mounted Plate Trees
- 10 x Single Post Plate Trees
- 2 x Dolly Trucks (for moving Bumper Plates)

ACFT Storage Locker - 16 Lane

- 16 x Hex Bar Storage
- 12 x Shelves
- 3 x Wall Mounted Plate Trees
- 15 x Single Post Plate Trees
- 2 x Dolly Trucks (for moving Bumper Plates)

ACFT Storage Locker - 20 Lane

- 20 x Hex Bar Storage
- 12 x Shelves
- 3 x Wall Mounted Plate Trees
- 20 x Single Post Plate Trees
- 2 x Dolly Trucks (for moving Bumper Plates)

BEAVERDOME: ACFT VARIANT

The ACFT BeaverDome is a fully customizable, enclosed solution designed to enable ACFT-specific training and testing, as well as create a multi-purpose human performance training area. The ACFT BeaverDome standard size includes 20 lanes within 150' by 160' and features high-quality, professional grade flooring. The ACFT Beaverdome has insulated roofing and walls, an HVAC system, lighting, and a coach's locker. Each 40' container has two roll up doors for easy entry and contains integrated modular shelving to store all required ACFT equipment. The BeaverDome solution can be customized to any size required and can be as robust or as sparse as the budget allows.

Features:

- Turf and Rubber Flooring
- Lighting
- Insulated Roof and Walls
- ACFT 62" Knee-Tuck Bars
- 25 Meter Lanes
- Integrated Storage
- Coach's Locker
- Custom Branding

Additional Options:

- Expanded Rig / Rack System
- Modular Shelving
- Rope Climb Towers
- Climbing Wings
- Squat Stations



PLAE: TURF SOLUTIONS

Stryker is a high performing modular turf system that boasts an easy to assemble Velcro connection that locks its 4' by 7.5' panels in place, creating a game ready field virtually anywhere — even on ice. Built on the Hybrid Flex Shock Pad, Stryker turf panels are not only light weight, but they're also built to withstand frequent installation and dismantling cycles. *PLAE offers both modular and permanent testing field solutions.*



**Stryker
Modular Turf**



**Stryker Pro
Modular Turf**

PLAE





WARRIOR[®] EXPO

Presented by ADS, Inc.

WARRIOREXPO.COM

CONNECT WITH US AT ADSINC.COM/EVENTS

100+ INDUSTRY SHOWS | NETWORKING MADE EASY



OUR PURPOSE.
YOUR MISSION.

ADS' SOLUTION FOR THE ARMY'S NEW HUMAN PERFORMANCE INITIATIVE

[ADSINC.COM/ACFT](https://www.adsinc.com/acft) | + 1 800.948.9433

©2019 ADS, Inc. The ADS logo is a registered trademark of Atlantic Diving Supply, Inc.